

**LabCommerce, Inc.**<sup>TM</sup>

*Providing products, solutions and value to laboratories*

**LabCommerce MPC315  
Preconcentrator  
for Volatile Organic Compounds  
(VOCs)**



# LabCommerce MPC315 Preconcentrator



*This instrument is the most advanced VOC Preconcentrator in the world. It can be used for both EPA TO-14 and TO-15 analysis. The novel design of its hardware and software makes it more powerful in handling a variety of air samples. The advanced temperature control system keeps the temperature variation under  $\pm 2^{\circ}\text{C}$ , thus guaranteeing more stable and accurate analysis.*

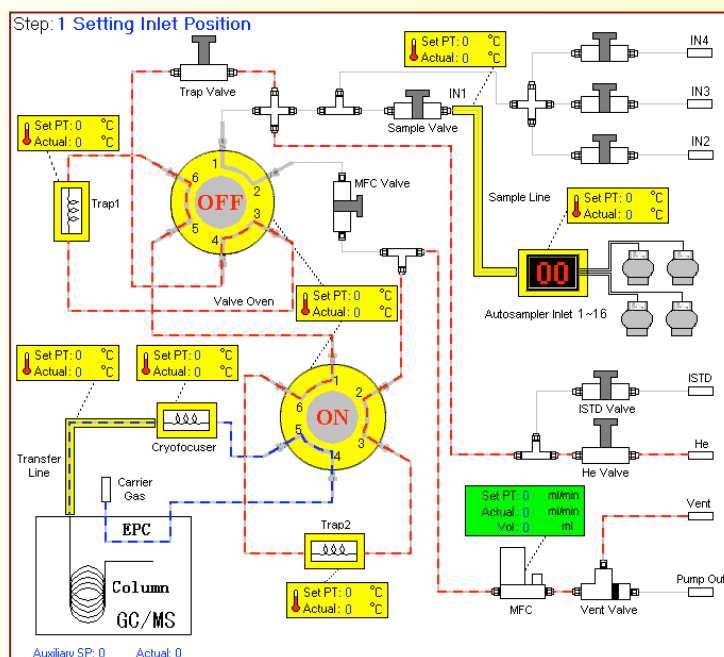


## Hardware Features

- ◆ Three-Stage Cryogenic Traps
- ◆ High Sensitivity and Wide Calibration Range
- ◆ High Accuracy and Repeatability
- ◆ Powerful Capability in Sample Handling
- ◆ Advanced Temperature Control
- ◆ Three (3) Additional Sample Inlets
- ◆ USB Interface and User-Friendly Software
- ◆ QA/QC Print, Leak-Check Print, Sequence-and-Method Table Print

## Software Features

- ◆ Flexible concentration method configuration: bypass trap1 and/or bypass focuser, plus variable internal options for versatile applications.
- ◆ Powerful customizing capability: any method defined by users can be incorporated without any change to the hardware, thus facilitating leading-edge research.
- ◆ Intuitive Gas Path Graphic Display
- ◆ Easy-to-Edit Sequence Control
- ◆ Speed Functions
- ◆ Comprehensive QA/QC Report
- ◆ Compatible with Windows 2000, XP, and Vista Operating Systems.



## *LabCommerce Preconcentrator MPC315*

### *Technical Specifications*

#### **Hardware**

##### ◆ **Three-stage cryogenic traps**

1. Glass bead trap: -190°C~250°C
2. Tenax multimedia trap: -190°C~250°C
3. Cryofocuser: -190°C~250°C

##### ◆ **Sensitivity**

0.1ppbv to percent level for most volatile organic compounds (VOCs).  
Concentration ability: > 1000:1

##### ◆ **Accuracy and Repeatability**

Within 90-110% recovery and 5% RSD for most VOC compounds with a sample loading range of 5 ~ 1000ml.

##### ◆ **Sample Handling**

Internal tubing is made of silica-coated stainless steel.  
5 ~1000mL loading range with 0~100 relative humidity.  
Mass Flow Control (MFC) operating range: 5~120mL/min with ±2% accuracy.

##### ◆ **Temperature Control**

Advanced advanced temperature control (ATC) with ± 2 °C accuracy.

##### ◆ **Gas Inlets**

Independent internal standard inlet and four (4) additional sample inlets.  
16 sample inlets with optional autosampler.

##### ◆ **Electrical/Temperature Requirements**

110VAC/60Hz ± 10% with max 1500W, 0 to 40°C with < 90% RH.

##### ◆ **Dimensions**

14.17"W x 20.08"H x 20.08"D (36 W X 51 H X 51 D cm)

##### ◆ **Weight**

Net weight: 65.04 lbs. (29.5 kg)

#### **Software**

##### ◆ **Intuitive Gas Path Graphic Display**

Every single change of valve status, temperature of cryo-traps, gas flow rate, gas path and flow direction are displayed dynamically in real time for every step, giving you the most intuitive illustration of the complete concentration process.

##### ◆ **Easy-to-Edit Sequence Control**

Complex sequence can be easily compiled in advance and saved for later execution.  
During the execution of a sequence, you can add, remove, or reposition the order of a method.  
Intuitive display of execution status: executed method in grey italic, blinking method in execution.

##### ◆ **Speed Functions**

A one-click speed button for most common functions: Reset, Idle, System Purge, Backout Trap1, Backout Trap2, Flush Sample Line, and Leak-Check.

##### ◆ **Comprehensive QA/QC Report**

##### ◆ **Compatible with Windows 2000, XP, and Vista Operating Systems.**

---



## Contact Us:

### **LabCommerce, Inc.**

1220 Memorex Drive, Suite 100  
Santa Clara, CA 95050  
U.S.A.

(408) 265-6482 || (408) 265-6082 Fax

Email: [info@labcommerce.com](mailto:info@labcommerce.com)

[www.labcommerce.com](http://www.labcommerce.com)

---